

# Switch Boxes, Coupling

## Switch boxes for CT 2501, CT 6001, MT 60M, MT 101 M

Switch boxes are required for length gauges with motorized plunger actuation. The plunger is controlled through two push buttons or by external signal. The gauging force is adjustable at the SG 25M and SG 60M switch boxes in three stages.

### SG 25M ID 317436-01

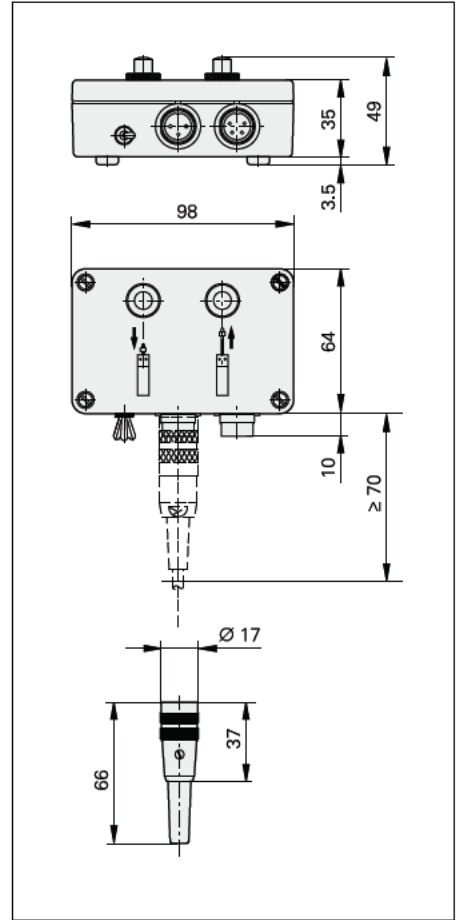
### SG 60M ID 317436-02

### SG 101V<sup>1)</sup> For the MT 101 M in vertical operation ID 361140-01

### SG 101H<sup>1)</sup> For the MT 101 M in horizontal operation ID 361140-02

### Connector (female) 3-pin For external operation of the switch box ID 340646-05

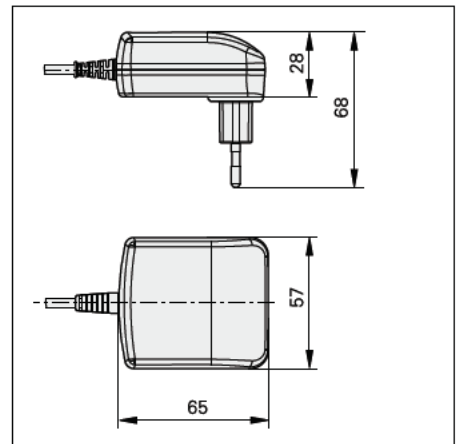
<sup>1)</sup> Separate power supply required



## Power adapter for SG 101V/H An adapter connected to the switch box powers the MT 101 M.

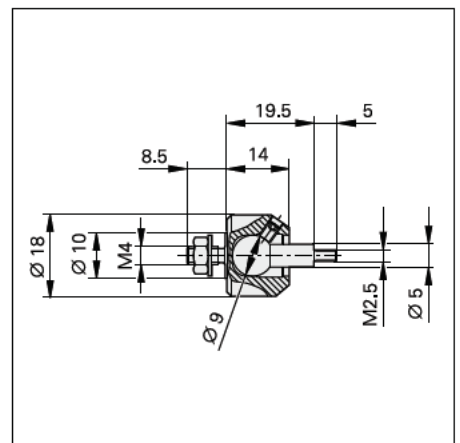
Voltage range 100 to 240 V AC  
Exchangeable plug adapter (U.S. and Euro connectors included in delivery)

ID 648029-01



## Coupling For connecting the plunger of the length gauge (specifically for the MT 60K, MT 101 K, CT 2502 and CT 6002) to a moving machine element

ID 206310-01



mm  
Tolerancing ISO 8015  
ISO 2768 - m H  
< 6 mm: ±0.2 mm